



Oral Language is the Foundation of Literacy

According to the **Science of Reading**, foundational literacy and oral language go hand in hand. Really Great Reading and OxEd & Assessment have come together to simplify your students' **journey from strong oral language to confident reading**.

TEL Ted is a complete oral language toolkit, helping your students' literacy to bloom.

Designed to develop speaking skills in students aged 4-7, TEL Ted brings you:



Oral Language Assessment
in less than ten minutes per student



Professional Development
in oral language fundamentals and program delivery



Whole Class Instruction
flexible and adaptive to specific needs of class



Targeted Intervention
small group and individual sessions



Grounded in research



From early learners to strong readers



Closes the attainment gap



Accurate assessment of oral language unlocks literacy



Early identification and **structured interventions** improve oral language skills, reduce later support needs, and **boost literacy outcomes** for all.

Part of the TEL Ted program, LanguageScreen is a complete oral language assessment.



LanguageScreen assesses students' fundamental language skills:

- Expressive Vocabulary
- Receptive Vocabulary
- Listening Comprehension
- Sentence Repetition



Easy to administer, objective, and validated, LanguageScreen can help your school to:

- Identify language difficulties
- Quantify language skills based on age-expected norms
- Track progress of individual students & classes
- Reduce referrals for specialist support

Proven by Research

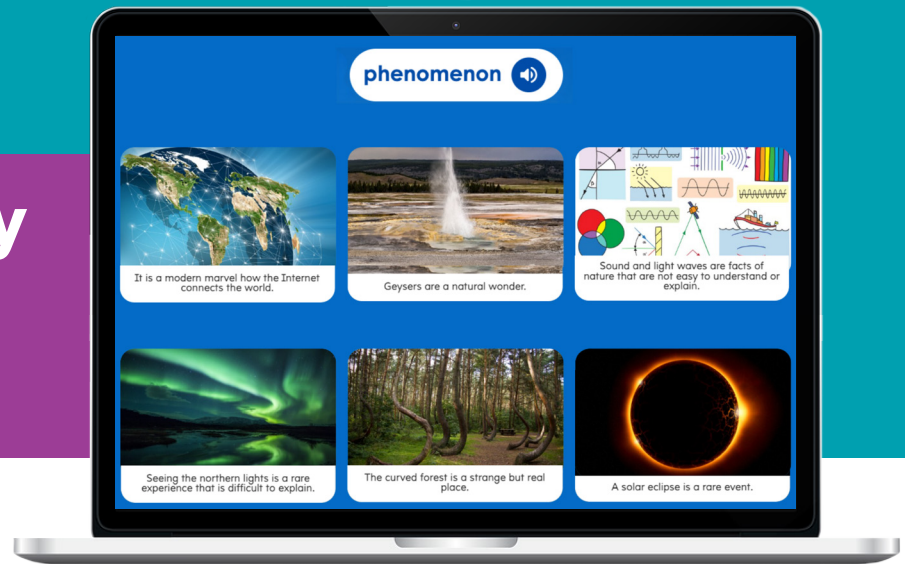
Several studies and independent evaluations have validated the program's effectiveness:

- Students make up to seven months' additional progress in language skills in just six months
- ELs make the same progress as students whose first language is English
- Long-term positive effects are observed even two years after the intervention
- Behavior improves significantly (compared to the control group)


**Sign up for a free
14-day trial!**





Bring vocabulary to life with InferCabulary




Designed for **Grades 3-12**, InferCabulary strengthens students' ability to understand the **deeper meaning of texts**, cultivating the robust vocabulary necessary for **academic success**.

 Research-proven, multimodal program that mimics natural word learning

 Builds vocabulary while enhancing oral language, inferencing skills, and background knowledge

 Prepares students for academic success

 Implemented in three 20-minute sessions per week, or 10 minutes daily

 Supports independent acquisition of Tier 2 vocabulary

The results from a large-scale, multi-state 2022 study are clear:



InferCabulary teaches words
3-4x faster
than direct instruction

Source: Comparing Two Established Multimedia Approaches for Teaching Vocabulary to Students with and Without Disabilities, Journal of Special Education Technology, 2022

"InferCabulary is an excellent digital tool for building deep vocabulary skills through multisensory cues and the use of a new approach: semantic reasoning. It helps plug a huge hole for us regarding online tools that directly help students develop a key, often overlooked reading and language ability. Best I've seen in a long time."

Dr. Michael Hart, Educational Consultant & International Literacy Expert, Nashville, TN

Boost vocabulary acquisition and comprehension with InferCabulary



Accelerated Vocabulary Acquisition

- Mimics the experience of wide and avid reading as the result of multiple encounters in a variety of tasks over time
- Promotes deep word learning as students encounter Tier 2 vocabulary in various contexts



Multimodal, Interactive Learning

- Learners are immediately engaged with real-world images that reflect the nuanced meanings of each vocabulary target
- Students learn through evidence-based strategies, including semantic reasoning, embodied cognition, and extended mapping



Customizable and Extensive Word Library

- Teachers select vocabulary from a broad library of 500+ literature titles and a variety of word categories, such as 600+ SAT words, that can be tailored to specific goals
- Educators have the ability to utilize portions of texts from other literacy sources to create word lists
- Effective for general education, ELs, and students with learning differences



Empowers Independent Learning

- Students gain control over their vocabulary growth, enhancing their confidence in reading, fluency, comprehension, and written expression
- Encourages students to analyze patterns, connect with their own background knowledge, and engage in critical thinking while learning new words in a visually engaging, supportive learning environment

"This research-based tool taps into language acquisition skills by teaching language the way language was intended to be taught, through social context. It pulls out vocabulary words that are part of students' reading and helps them explore their meaning. No matter what strengths they have, InferCabulary allows students to learn via multiple intelligences."

Felicia Mizgorski, Educator/Training Specialist at Center for Teacher Effectiveness

Learn more





How Semantic Reasoning Enhances Vocabulary Learning

InferCabulary strengthens **vocabulary acquisition** by engaging students in **inferential thinking**, using a mix of **visual and text-based clues**. Instead of directly providing static definitions, the program strategically presents multiple captioned images, each carefully selected to illustrate a different facet of an unknown term's meaning. This **encourages students to identify connections and infer meanings** actively.

This intentional focus on inferential reasoning within InferCabulary demonstrably strengthens crucial cognitive skills:



Inference Skills

Students actively engage in using visual and contextual cues embedded within the app to determine the meanings of unknown words.

These elements are thoughtfully integrated within the app's explicit instructional framework, contributing to its positive impact on vocabulary acquisition. The emphasis on inferential reasoning in InferCabulary represents a hybrid student-centered yet teacher-scaffolded instruction that can lead to a deeper type of vocabulary learning.



Deeper Vocabulary Learning

Carefully scaffolded opportunities enable students to apply their inferencing skills, leading to more profound learning that extends beyond surface-level understanding.

These elements are integrated within the InferCabulary's instructional framework, fostering a deeper approach to vocabulary learning. Research shows that vocabulary development is tied to word recognition through phonology and semantic representation, which in turn supports reading comprehension (Ouellette, 2006).



Breadth, Depth, and the Mapping Processes in Vocabulary Acquisition

Vocabulary learning encompasses two key aspects: breadth and depth. Breadth refers to the number of words a learner knows, while depth involves the richness of their knowledge about each word, including meanings, uses, and connections to other words (Beck et al., 2013). Effective vocabulary instruction should address both to build strong language skills.

In addition, fast and extended mapping are critical for vocabulary growth. Fast mapping helps learners gain a surface-level understanding of a word after minimal exposure, rapidly expanding vocabulary. Extended mapping, which involves repeated exposure to words in different contexts, deepens understanding and strengthens word connections (Clarke et al., 2010).

InferCabulary is uniquely positioned to expand the breadth and depth of vocabulary knowledge while supporting fast and extended mapping. InferCabulary facilitates quick initial learning through multimodal and interactive tools, providing opportunities for deeper, repeated engagement with words. The multiple encounters built into the program's algorithm mimic extended mapping and raise awareness of a word's nuanced meanings.



Multiple Contexts



Student Friendly Language



Critical Thinking and Reasoning



Activation of Background Knowledge



Citing Evidence from Images and Text





How Really Great Reading Builds a Strong Literacy Foundation

Really Great Reading (RGR), in partnership with **OxEd & Assessment**, integrates **oral language**, **vocabulary**, and **reading** into one streamlined, research-based literacy solution. Each component is essential on its own—but together, they create a powerful foundation for student success in reading, writing, and communication.

Oral Language: The Starting Point of Literacy

Oral language development is foundational for literacy success. Without it, students often struggle with both comprehension and written expression later in their academic journey.

Research shows that students in this program gain up to seven months of additional oral language progress in just six months—gains that are equally strong for English Learners.

Why it matters

Oral language lays the groundwork for vocabulary growth, comprehension, and the ability to make meaning from text. It directly supports the development of semantic reasoning—critical for interpreting the language of increasingly complex texts.

Through RGR's partnership with OxEd & Assessment, schools gain access to the **TEL Ted** program and **LanguageScreen** assessment, which:



Identify expressive and receptive vocabulary gaps in students ages 4–7



Offer fast, accurate, age-normed assessments in less than 10 minutes per student



Support classroom instruction, intervention, and professional development



Close early language gaps and reduce the need for later interventions



Vocabulary:

Deep, Meaningful Word Learning

Vocabulary is not just about memorizing definitions—it's about making meaning. RGR's **InferCabulary** takes a groundbreaking approach by teaching students to think deeply about words through **semantic reasoning**.

Semantic reasoning is the process of using logic, context clues, and background knowledge to infer meaning. It's how students make sense of unfamiliar words—an essential skill for strong readers.

Why it matters

A robust vocabulary bridges oral language and comprehension. InferCabulary equips students with the words they need to access complex texts, express ideas clearly, and succeed academically across subjects.

Designed for Grades 3–12, InferCabulary:



Uses images, context, and semantic reasoning to build deep word understanding



Enhances oral language, inferencing skills, and background knowledge



Supports ELs and students with learning differences through multimodal instruction



Accelerates learning—up to 3–4x faster than traditional direct instruction methods



Promotes independent learning and confidence in reading and writing

Reading:

Putting the Pieces Together

Reading proficiency emerges when students receive explicit, systematic instruction across all components of foundational literacy—including oral language and vocabulary.

Really Great Reading's suite of programs—Countdown, Blast, HD Word, and more—are:



Grounded in the Science of Reading, ESSA-approved, rated All-Green by edReports, and received no red flags from The Reading League.



Easy to implement with scripted lessons, embedded assessments, and minimal prep



Designed to improve fluency, comprehension, and written expression across PK–12



Proven to deliver fast, measurable results for general education students and ELs alike

With instruction as little as 15–20 of direct instruction per day, RGR programs help students:



Build decoding and phonics skills



Map words orthographically (the mental connections between sounds, letters, and meaning)



Achieve automaticity and comprehension through connected reading and writing practice





Bringing It All Together: One Integrated Solution

Oral language, vocabulary, and reading are not separate efforts—they are interconnected strands that form the fabric of skilled literacy. RGR unites them into one seamless ecosystem:



OxEd and RGR provide early oral language assessment and intervention that closes gaps before they widen



InferCabulary provides robust vocabulary and semantic reasoning for deeper comprehension



Core RGR Programs provides structured, data-driven reading instruction for lifelong literacy

Together, they create a **literacy solution that is accessible, efficient, and effective**, empowering teachers and unlocking student potential across all grade levels.

