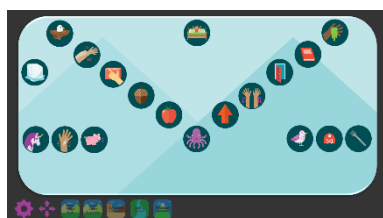


Digital Sound-Spelling Wall Preview

Really Great Reading is excited to announce the upcoming release of a brand new digital sound-spelling wall. This exciting resource is designed for full classroom use and can replace or enhance your current sound wall. The RGR Sound-Spelling Wall features guideword icons, mouth position images, articulation videos, and basic and advanced spellings for each phoneme. The RGR Sound-Spelling Wall also includes a wide variety of sound sorts (consonant and vowel) and phoneme manipulation exercises that can be done whole class or in small groups.

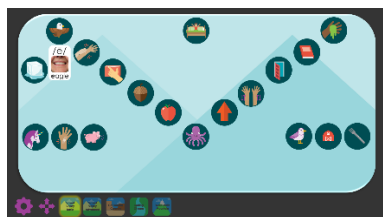


VOWEL VALLEY

The RGR Sound-Spelling Wall Vowel Valley includes a guideword icon for each of the 19 vowel phonemes that exist in English. The guideword icons are the primary icons used in *Launchpad*, *Countdown*, and *Blast Foundations*. However, the sound-spelling wall can also be used in conjunction with *HD Word* or any other foundational skills program.

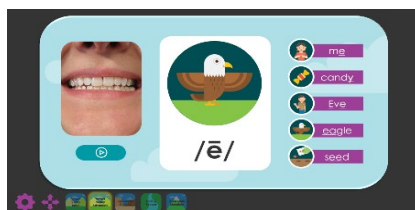
Basic

In the basic view of the Vowel Valley, as you click on a guideword icon, a card expands below with the phoneme in a sound box, a mouth position image, and the word associated with the guideword icon – feature grapheme underlined. Click a second time to remove the card. In this view, you may open multiple phoneme-grapheme cards as are needed for instruction. For instance, when comparing the *long e* phoneme with the *short e* phoneme, you may want to display both cards.

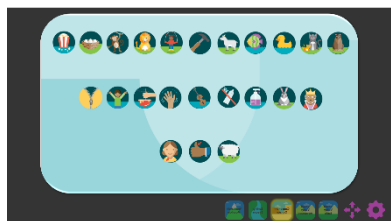


Advanced

In the advanced view of the Vowel Valley, as you click on a guideword icon, a large, full-screen card expands. This card includes: the mouth position image with an option to play an articulation video; the primary guideword icon with the phoneme in a sound box below; and the most common spellings for the phoneme, complete with guideword icons, word spellings, and underlined target graphemes. This view will display information on just one phoneme at a time.



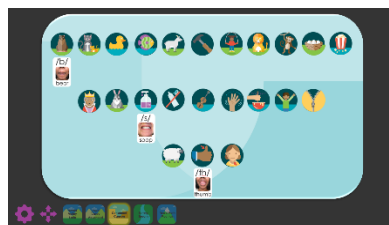
CONSONANT CANYON



The RGR Sound-Spelling Wall Consonant Canyon includes all 20 unique consonant phonemes and the three unique digraph phonemes (/sh/, /th/, and /ch/) as well. The guideword icons are the primary icons used in *Launchpad* and *Countdown*. However, the sound-spelling wall can also be used in conjunction with *Blast Foundations*, *HD Word*, or any other foundational skills program.

Basic

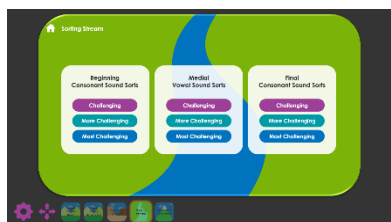
The basic version of the Consonant Canyon operates as the Vowel Valley does. See above for an explanation.



Advanced

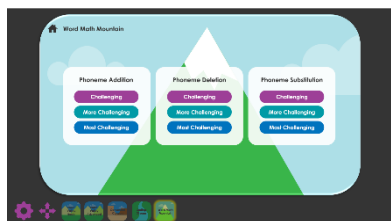
The advanced version of the Consonant Canyon includes the basic 20 consonant phonemes, the 3 basic digraph phonemes, and 3 additional consonant phonemes (voiced /th/, /zh/, and /ng/). This view of the Consonant Canyon operates the same as the advanced view of the Vowel Valley, displaying information for just one phoneme at a time, but giving more information.

SORTING STREAM



Another feature of the RGR Sound-Spelling Wall is the Sorting Stream. This will be added later this fall. You will find beginning consonant sound sorts, medial vowel sound sorts, and final consonant sound sorts at three levels of difficulty. Within each challenge level are five pre-selected sound sorts to complete with students in a whole class or with a small group.

WORD MATH MOUNTAIN



Also coming later this fall, Word Math Mountain includes manipulation activities that target phoneme addition, phoneme deletion, and phoneme substitution. Each task has three levels of difficulty and three options for placement of manipulation (initial, medial, final phoneme).

More information will be released throughout Fall 2023!